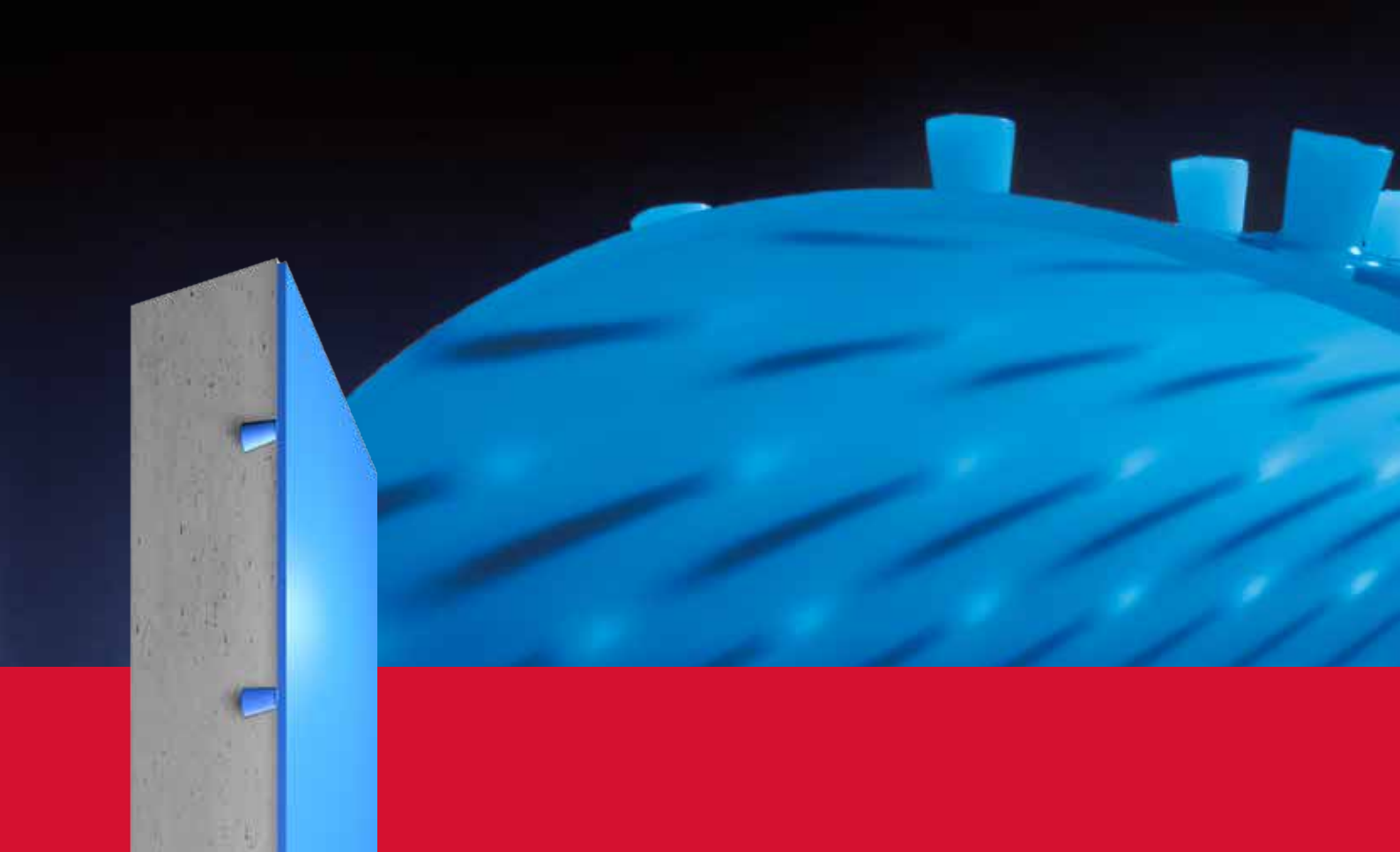




Surface protection systems | **BEKAPLAST AQUA-LINING 400**





Requirements

Permanent leak-tightness, mechanical strength and chemical resistance. Specially developed to meet the requirements specifically associated with handling potable water, Aqua-Lining 400 satisfies that broad range of needs. No matter what the tank geometry, the flexible sheets are suitable both for new construction and for the renovation of existing potable water tanks.

Material

STEULER-KCH has been using polyethylene in piping systems, tanks, pits and drainage channels for decades. Wherever the resistance of concrete and steel reaches its limits, linings made of polyethylene provide enduring security.

That experience has been applied and further developed to create Aqua-Lining 400, our system for lining potable water tanks.

Left: STEULER-KCH Aqua-Lining 400 can be used in new construction or renovation



Bekaplast Aqua-Lining 400 – Permanent protection for potable water tanks

Manufacturer

STEULER-KCH has been developing tailor-made solutions for the surface protection of buildings, plants and equipment for more than 100 years. Those solutions focus both on surface water protection and on maintaining the value of assets.

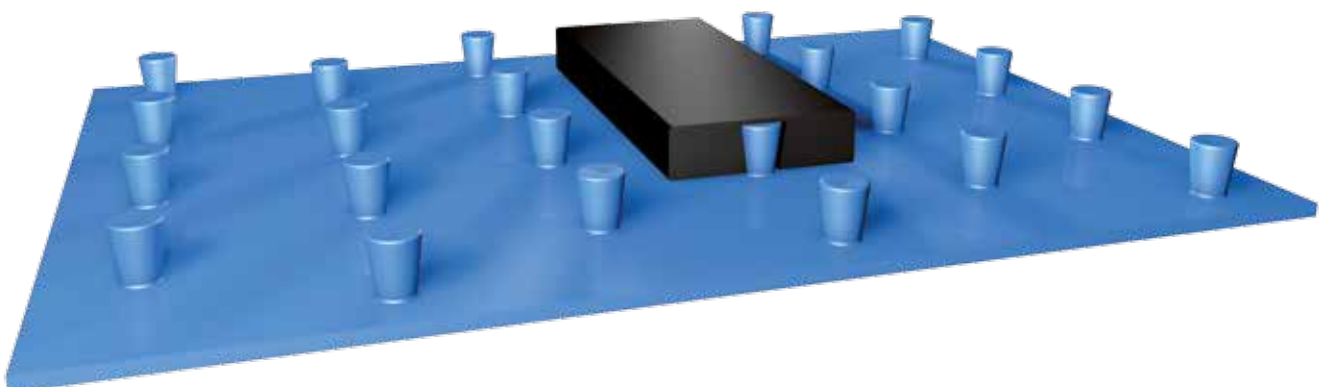
Service

The product range of STEULER-KCH has included thermoplastic linings for more than half a century. We plan, produce, deliver, and can also install Aqua-Lining 400 – exactly according to your wishes. You will receive our full support during the preparation and implementation of your project, no matter whether it involves the manufacture of pre-fabricated sheets, special solutions such

as brackets, penetrations and connections, or supporting your construction supervisors and providing quality assurance during installation.

General

- Deliverable in rolls or sheets
- Pre-fabrication possible
- Colour: blue, similar to RAL 5012
- Easy-to-clean surface
- The material meets the requirements of Technical Standard W 270 of the DVGW (German Technical and Scientific Association for Gas and Water)





Bekaplast Aqua-Lining 400 for the construction of new potable water tanks

New construction

In the construction of new potable water tanks, the Aqua-Lining 400 sheets are attached to the wall formwork and joined together with sections. The walls are subsequently concreted. The flooring is laid in the screed after removal of the forms. The anchor studs ensure a positive bond in both the concrete and in the screed substrate. Subsequently the joints between sheets are sealed by welding in accordance with DVS guidelines.

Advantages in new construction:

- Easy handling, easy operation
- Positive bond between concrete and Aqua-Lining 400 liner (approx. 400 anchor studs per m²)
- Bridging of cracks in the substrate
- Can also be used in ceiling applications
- High chemical resistance
- High mechanical strength
- Leak detection by means of spark coil possible
- Smooth and anti-adhesive surface
- Physiologically safe

BEKAPLAST AQUA-LINING 400



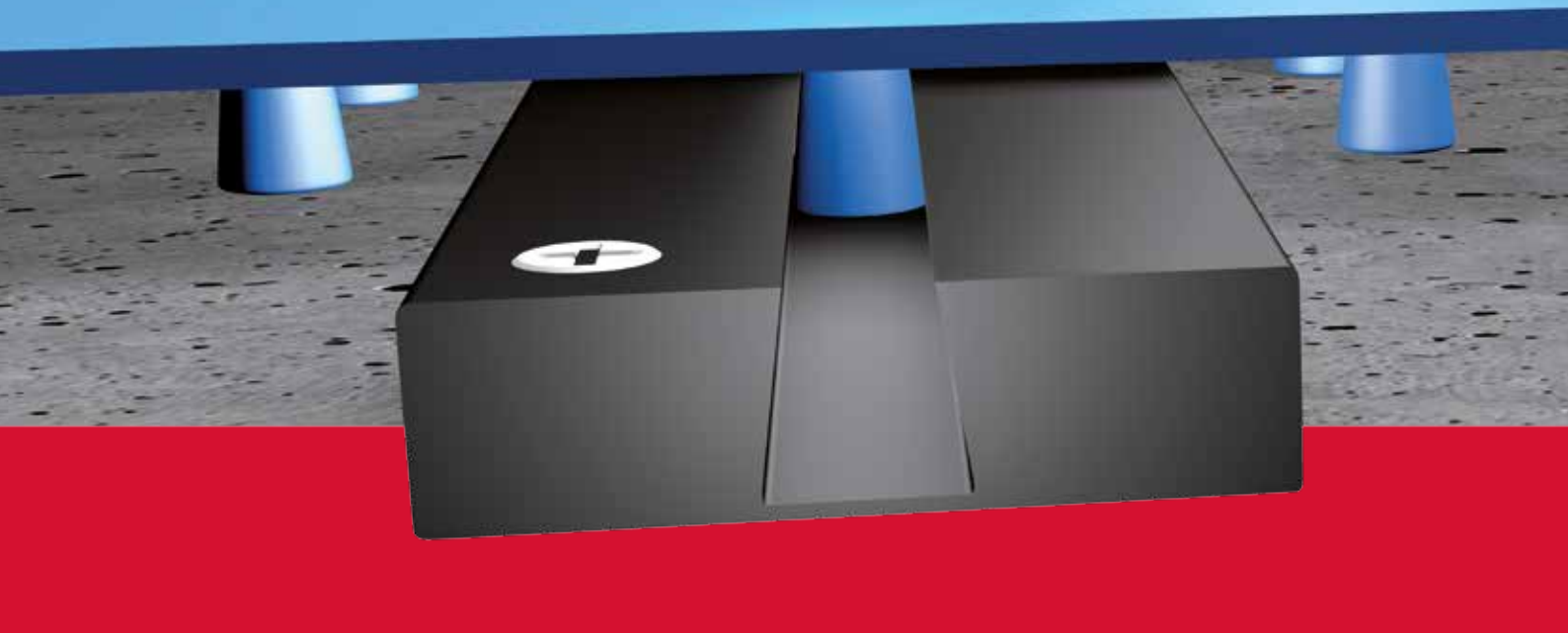
Above: Prior to pouring the concrete, the polyethylene bands are laid in the wall formwork and joined with sections



Above: Once the concrete has been poured and cured, all that remains is to seal the joints between the sheets by welding



Above: Aqua-Lining 400 enables the completely lined potable water tank to meet hygiene requirements while reducing maintenance costs and extending service life.



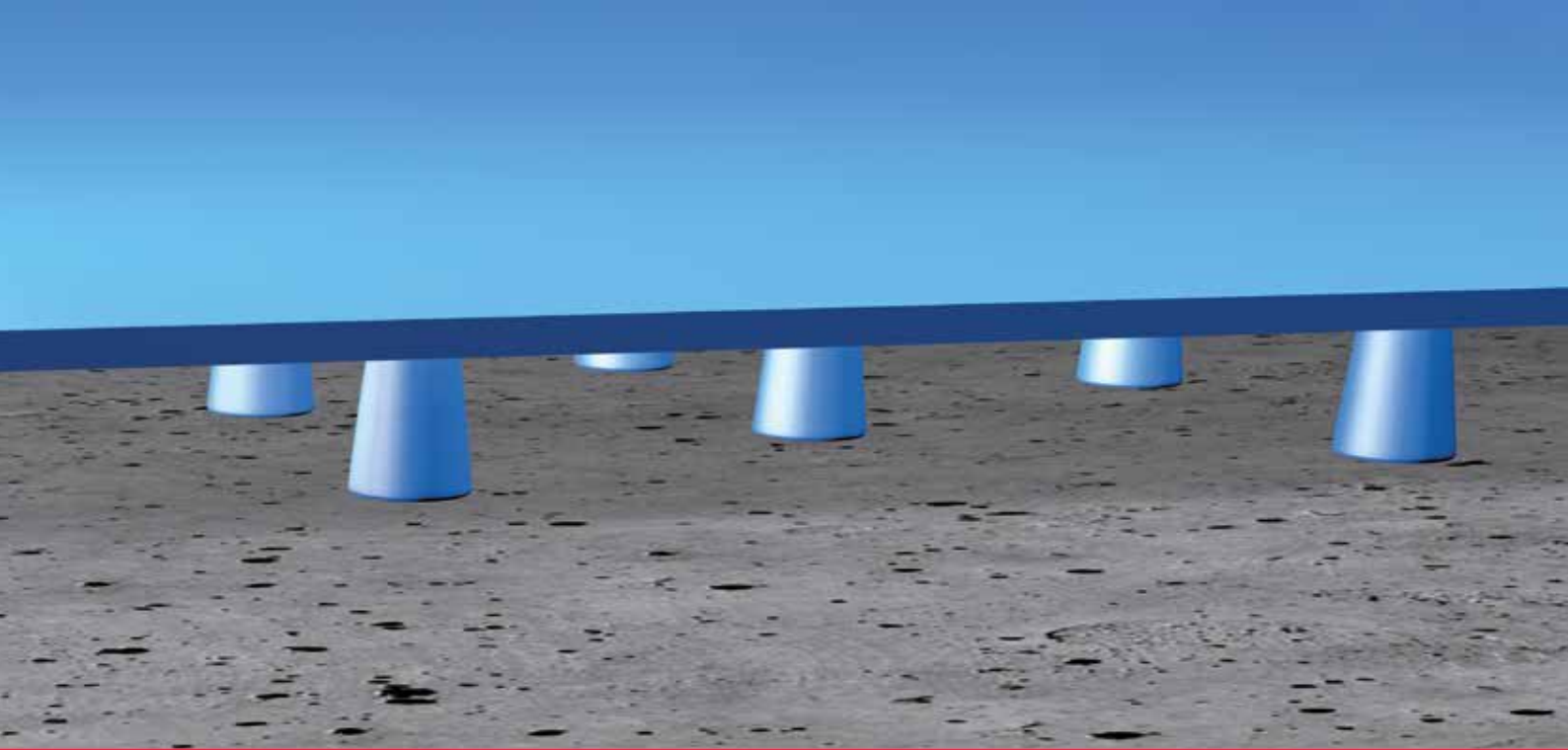
Retrofit installation in existing tanks

When renovating potable water tanks with Aqua-Lining 400, the fastener system plays a decisive role. The insertion rails included in the system are attached to the substrate by means of dowels. These rails hold the Aqua-Lining 400 sheets securely while permitting a variable installation pattern. The joints between the sheets are also firmly secured to a dowel-mounted HDPE strip and sealed by welding.

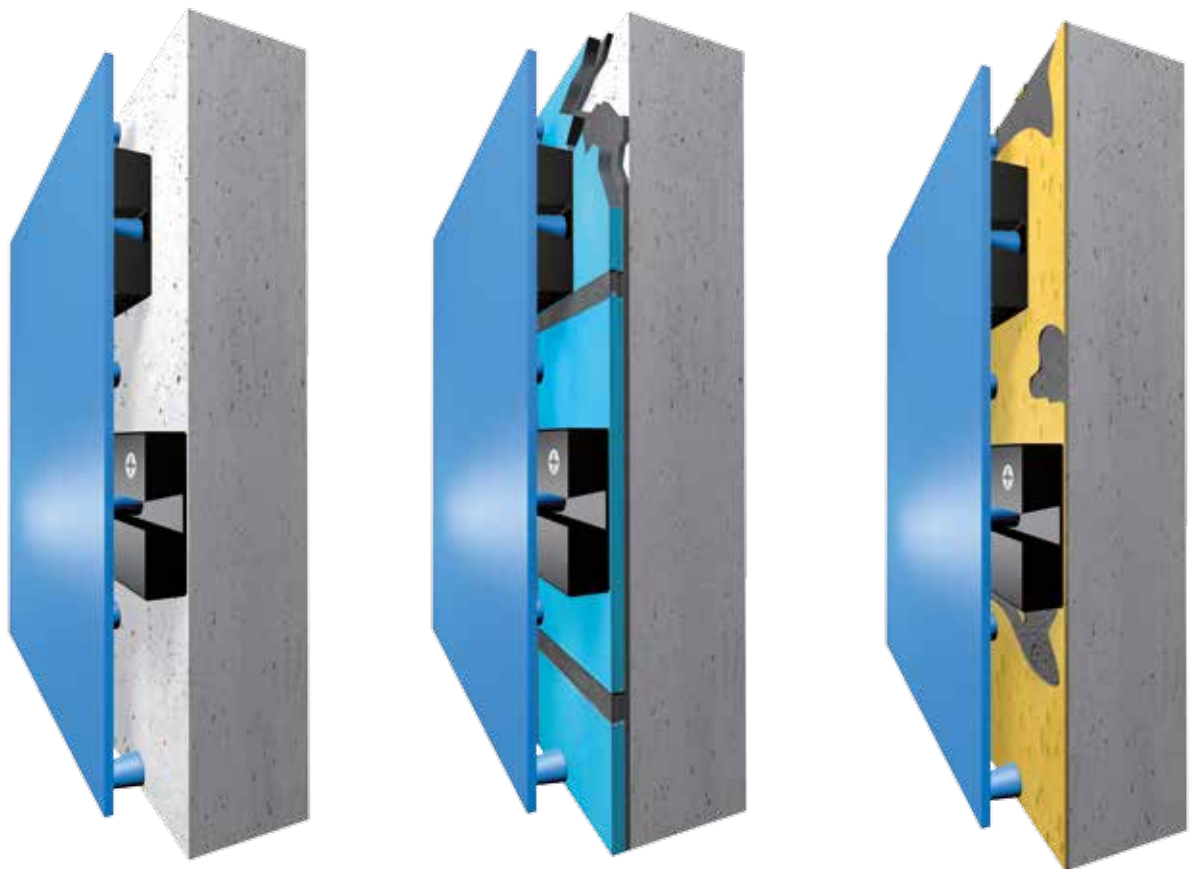
This special fastening technology makes it possible to renovate existing potable water tanks easily and rapidly. Additional time and cost savings result from the fact that old linings which are defective (e.g. mineral, epoxy resin or chlorinated rubber coatings) usually need not be removed. Applicable technical standards and the procedures of the trade associations must be observed.

Advantages in renovation:

- Easy handling, easy operation
- Reliable bond between concrete and Aqua-Lining 400 liner
- Bridging of cracks in the substrate
- Can be installed over existing linings
- Can also be used in ceiling applications
- High chemical resistance
- High mechanical strength
- Leak detection by means of spark coil possible
- Smooth and anti-adhesive surface
- Physiologically safe
- Suitable for temperature fluctuations of up to 20°C
- Leakage monitoring possible



Bekaplast Aqua-Lining 400 for the renovation of potable water tanks



Above: Aqua-Lining 400 in the renovation of potable water tanks, retrofit installation on any substrate, such as concrete, tiles or coatings



STEULER KCH

Alphaplast S.A.
Spain

CIMA S.r.l.
Italy

Ditescor S.A. de C.V.
Mexico

**Shanghai STEULER-KCH
Anticorrosion Engineering
Co. Ltd.**
China

**STEULER-KCH Australia
Pty. Ltd.**
Australia

STEULER-KCH Austria GmbH
Austria

STEULER-KCH France S.A.R.L.
France

STEULER-KCH GmbH / Jordan LLC
Jordan

STEULER-KCH Maroc S.A.R.L.
Morocco

STEULER-KCH Nordic AB
Sweden

STEULER-KCH Polska Sp. z o.o.
Poland

Steuler New Caledonia S.A.R.L.
New Caledonia

Steuler Técnica S.L.
Spain

STEULER-KCH
Branch Saudi Arabia

**Tecresa Tecnicas
de Refractorios S.A.**
Spain



Together with its international subsidiaries and representatives, STEULER-KCH offers its customers a worldwide network which develops and implements comprehensive system solutions.



SURFACE PROTECTION

Lining and flooring systems
Cements, jointing materials,
brick and rubber linings

PLASTICS ENGINEERING

Equipment, piping and tanks made of
duroplastics and thermoplastics
Thermoplastic lining systems

REFRACTORY SYSTEMS

High temperature refractory linings

POOL CONSTRUCTION

STEULER-Q²-System



Siersshahn site



Höhr-Grenzhausen site

STEULER-KCH GmbH

Berggarten 1
56427 Siersshahn | GERMANY

Phone: +49 2623 600-0
Fax: +49 2623 600-513

E-Mail: info@steuler-kch.de
www.steuler-kch.de

Focus on Progress