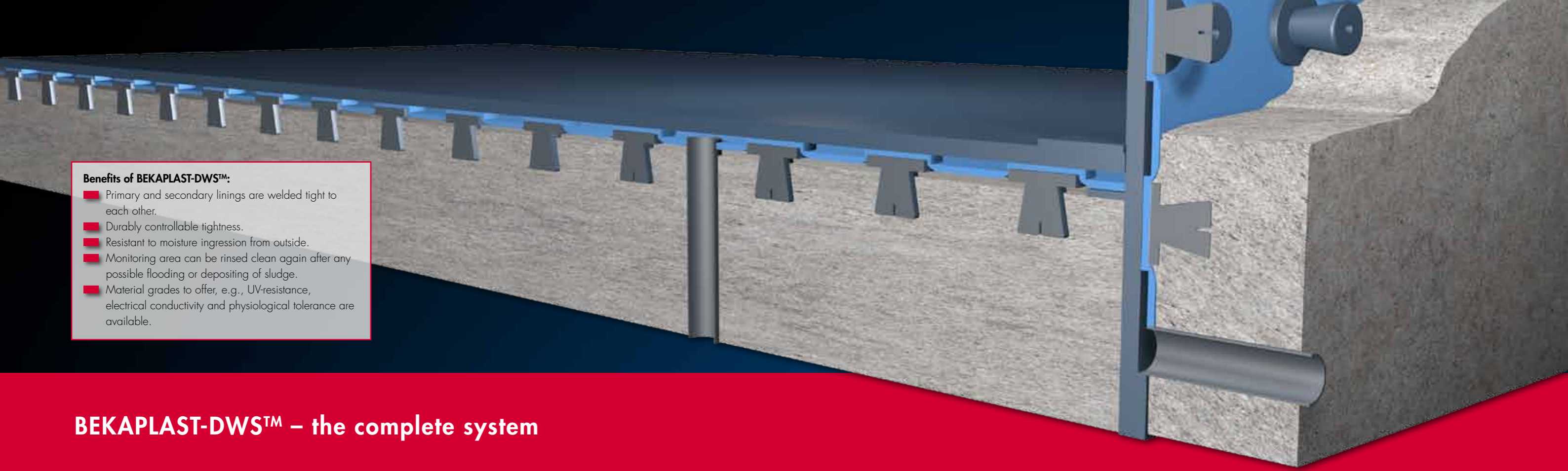


Plastics Engineering | **BEKAPLAST DWS™**

Double-wall system as a protective lining
for concrete offering leakage monitoring



- Benefits of BEKAPLAST-DWS™:**
- Primary and secondary linings are welded tight to each other.
 - Durably controllable tightness.
 - Resistant to moisture ingress from outside.
 - Monitoring area can be rinsed clean again after any possible flooding or depositing of sludge.
 - Material grades to offer, e.g., UV-resistance, electrical conductivity and physiological tolerance are available.

BEKAPLAST-DWS™ – the complete system

The BEKAPLAST DWS™ system is made up of a thicker thermoplastic front sheet that is welded tight to a second backing sheet to create a double-sheeting system. This double-sheet is then cast into the concrete and secured to it at the anchoring knobs as a sort of lost shuttering. In a final step, the seams in the sheets are welded tight. Viewed in terms of statics, the complete lining thus becomes a part of the concrete structure itself. This creates the prerequisite for reliable durability under a wide variety of operational conditions and loads.

BEKAPLAST DWS™ meets the technical safety and security requirements placed on subterranean concrete tanks, channels, catchment trenches and similar structures. Above-ground, the system can be applied to tanks in which leakage caused by mechanical loads cannot be ruled out, for instance in pickling tanks or stirring equipment used in the chemical or metallurgical industry.

The BEKAPLAST DWS™ material is processed as stipulated in our Technical Information Sheet entitled "Application technology – mechanically anchored thermoplastic linings." Polyethylene and polypropylene in a variety of thicknesses are available as materials.

Decisive advantages for future-proof structures

There are numerous different sub-floor catchment and collection trenches, piping and connecting shafts in industrial and municipal sewage systems that serve to hold liquids that pose a hazard to water quality.

In the wake of stricter environmental regulations, new demands are being made for ways to permanently monitor the tightness of linings. Subterranean tanks are usually no longer accessible from the outside

so cannot be checked visually. It must be possible, therefore, to find and repair any leaks that may occur automatically even before any water or adjoining soil can be contaminated.

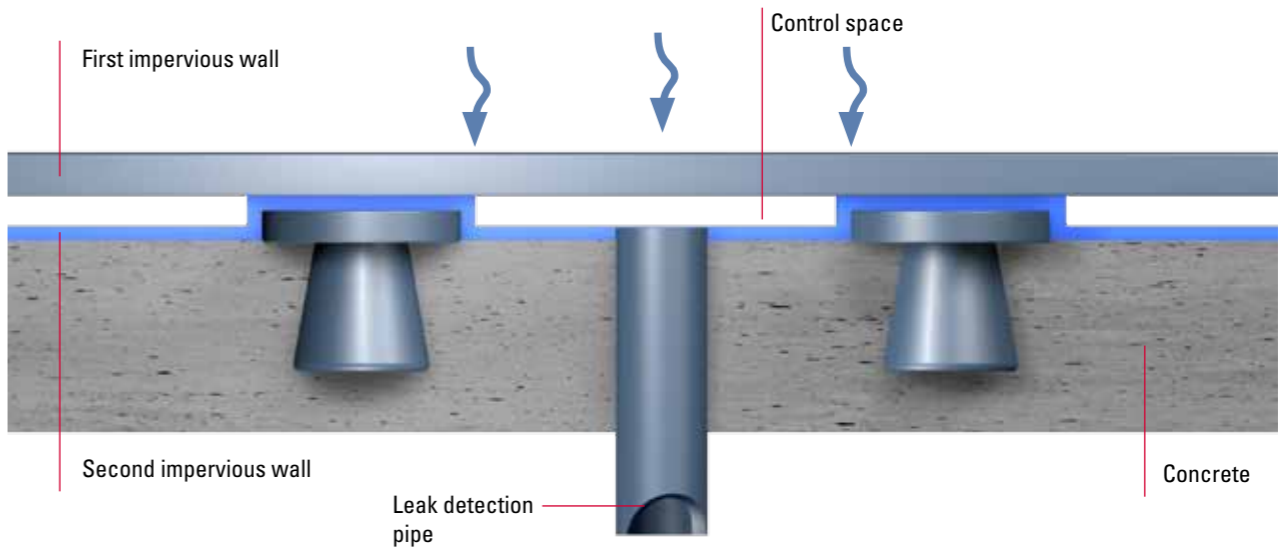
BEKAPLAST DWS™ meets these demands. Even above-ground pickling tanks or stirring equipment in the chemical industry, in which leakage due to heavy mechanical loads cannot be ruled out, can be safely and securely lined using BEKAPLAST DWS™.



Above picture: Pre-fabricated double-walled neutralisation tank system with BEKAPLAST-DWS™ inserted into the prepared structures and moulded into place.



Above picture: BEKAPLAST-DWS™ for water tanks.





Steuler Técnica S.L.
Spain

STEULER-KCH France SARL
France

Ditescor S.A. de C.V.
Mexico

Steuler Maroc S.A.R.L.
Morocco

Alphaplast S.A.
Spain

Steuler Nordic AB
Sweden

**Shanghai STEULER-KCH
Anticorrosion Engineering
Co. Ltd.**
China

CIMA S.r.l.
Italy

KCT Sp. z o.o.
Poland

**Steuler Industrial
Corrosion Protection
Pty. Ltd.**
Australia

**Steuler New Caledonia
S.A.R.L.**
New Caledonia

STEULER-KCH
Branch Saudi Arabia

STEULER-KCH
Branch Austria



Together with its international subsidiaries and representatives, STEULER-KCH offers its customers a worldwide network which develops and implements comprehensive system solutions.



SURFACE PROTECTION

Lining and flooring systems
Cements, jointing materials,
brick and rubber linings



PLASTICS ENGINEERING

equipment, piping and tanks made of
duroplastics and thermoplastics
Thermoplastic lining systems



REFRACTORY SYSTEMS

High temperature refractory linings



POOL CONSTRUCTION

STEULER-Q⁷ lining systems



STEULER-KCH GmbH

Plastics Engineering

Surface Protection
Pool Construction

Berggarten 1
56427 Stiershahn | GERMANY

Phone: +49 26 23 600-0

Fax: +49 26 23 600-513

Mail: info.bekaplast@steuler-kch.de

Refractory Systems

Georg-Steuler-Straße
56203 Höhr-Grenzhausen | GERMANY

Phone: +49 26 24 13-586

Fax: +49 26 24 13-305

Mail: ff.info@steuler-kch.de



www.steuler-kch.de

Focus on Progress